

9

Entering Body Flange Data

- ✓ Entering General Data
- ✓ Difference among Single, Mating & Blinded
- ✓ Viewing Attachments and Accessories
- ✓ Considerations

By Body Flange, we mean any flange which is attached directly to the equipment regardless of its service and function and without any need to nozzles. If you enter the nozzle data on the Nozzle Page, the software will automatically calculate its nozzle and consider it in material estimation. On the Nozzle Page, thus, concepts such as Nozzle Location and Nozzle Projection gain significance. However, in case you have a flange which is set directly on your equipment, enter its data on this page.

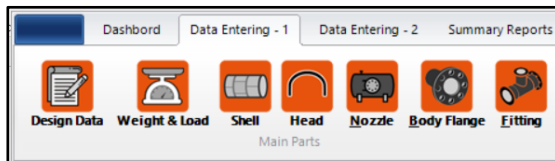


Fig. 9-1 – (Accessibility to Body Flange Data Menu)

✓ **Entering General Data**

Inserting Body Flange general data highly resembles inserting that of Nozzle. As a result, its menu, too, resembles that of Nozzle to a large extent.

The screenshot shows the 'BODY FLANGE' data entry form. It includes fields for Item No. (80-D-4803), Flange Facing (RF), Flange Size (24), Flange Standard (ASME B.16.5), Flange Rating (150#), Flange Type (WN), Flange Schedule (Sch STD), Face Finishing (SERRATED), Status (Blinded), Quantity (2), and Material (SA-105). A table below lists various flange specifications.

No.	Item No.	Flange Size (in)	Flange Standard	Flange Rating (Lb)	Flange Type	Flange Schedule	LWN Thk (mm)	Material	Flange Facing	Face Finishing	Single/
1	80-D-3802 B	16	ASME B.16.5	150#	WN	Sch STD	---	SA-105	RTJ	SERRATED	Singl
2	80-D-4803	24	ASME B.16.5	150#	WN	Sch STD	---	SA-105	RF	SERRATED	Blinde
3	88-D-9080	24	ASME B.16.5	150#	WN	Sch STD	---	SA-181-1	RF	SERRATED	Matin
4	80-D-3802 B	18	ASME B.16.5	150#	WN	Sch STD	---	SA-105	RTJ	SERRATED	Singl
5	80-D-3802 B	24	ASME B.16.5	150#	WN	Sch STD	---	SA-105 IMP	RF	SERRATED	Singl
6	80-D-3802 B	18	ASME B.16.5	150#	WN	Sch STD	---	SA-105	RF	SERRATED	Singl
7	88-D-9080	24	ASME B.16.5	300#	WN	Sch STD	---	SA-105 IMP	RF	SERRATED	Matin
8	80-D-3802 B	18	ASME B.16.5	150#	WN	Sch STD	---	SA-182-F316	RTJ	SERRATED	Singl
9	80-D-3802 B	24	ASME B.16.5	150#	WN	Sch STD	---	SA-181-1	RTJ	SERRATED	Singl
10	80-D-4803	24	ASME B.16.5	150#	WN	Sch 30	---	SA-105	RF	SERRATED	Singl

Fig. 9-2 – (Entering Body Flange Data Menu)

✓ Difference among Single, Mating & Blinded

We encounter status among the options related to Body Flange, and we must choose one of the options above among them. Yet, what is the difference at hand?

- **Single**

Choosing this option signifies that you need as many QTY Flanges with inserted features as stated in the field.

Having chosen this option, only the intended flange will be ordered.

- **Mating**

Choosing this option signifies that you need as many QTY **twin flanges** with inserted features as well as attachments and accessories as stated in the field.

Having chosen this option, QTY field must necessarily be filled with an even number. Suppose that you have set this number as 2, with regard to a specific size. In calculations and material estimation, therefore, **two flanges** along with **a set of related bolts and nuts**, and **one gasket** will be taken into account.

- **Blinded**

Choosing this option signifies that you need as many QTY flanges with inserted features as well as attachments and accessories as stated in the field. Suppose that you have set this number as 3, with regard to a specific size. In calculations and material estimation, therefore, **three flanges** along with **three Blind Flanges**, as well as **three sets of related bolts and nuts**, and **three gaskets** will be taken into account.

✓ Viewing Attachments and Accessories

If the Status field is filled with wither Mating or Blinded, you can view their related attachments and accessories by right clicking on either ones.

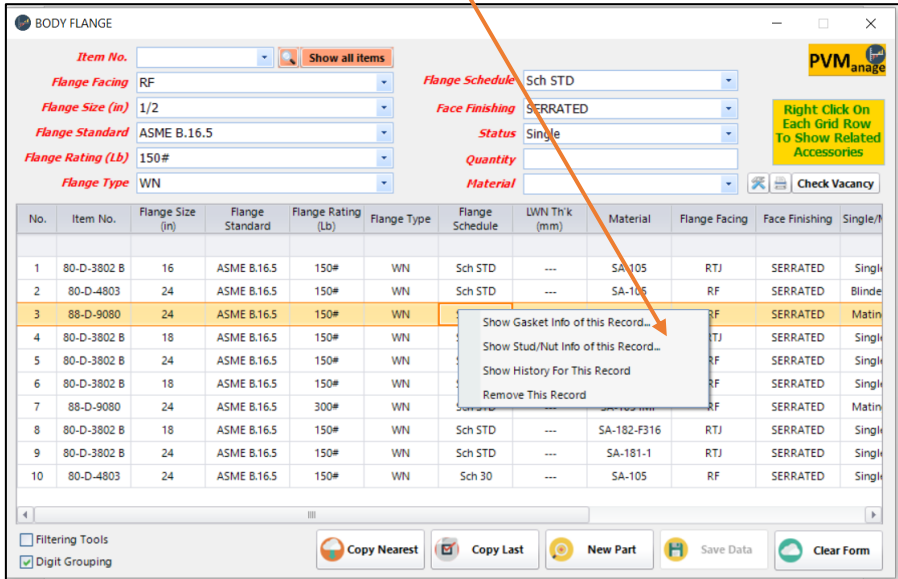


Fig. 9-3 – (Possibility of Viewing Attachments and Accessories of Body Flange Data)

In this part, you can double click on each record to complete or edit data on Material Index page.

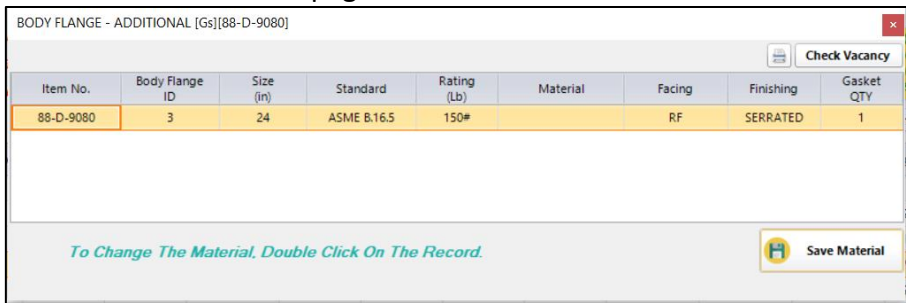


Fig. 9-4 – (Viewing Attachments and Accessories of Body Flange Data)

✓ **Considerations**

There is the possibility of inserting such attachments and accessories as Reinforce Pad and Internal Pipe when inserting nozzle data on Nozzle page. Although inserting these items for each Body Flange might seldom matter, you can insert any one of these items using Extra Parts area, if necessary.

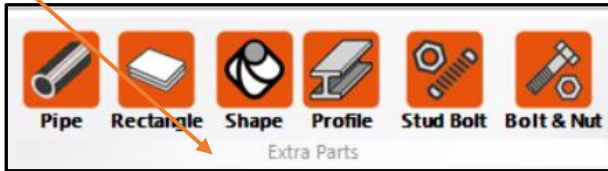


Fig. 9-5 – (Area for Inserting Data for Unconventional Items)